

About Us

PACS has provided commercial and industrial clients throughout North America with a simple, sustainable way to reduce energy consumption.

PACS have helped businesses achieve energy savings, increase profitability, and reduce their carbon footprint. PACS is gaining high accolades for providing clients with the highest quality, US and Canadian-made products. We offer industry leading customer service with the best guarantee.

PACS motto is:

“The RIGHT unit, installed the RIGHT way, for the RIGHT reasons”. We assure our clients that every PACS system will be installed properly and according to the strictest electrical codes.

Lease to Own

Reduce your cash outlay and lease our PACS today. We utilize top level banks and leasing companies for every opportunity.



Satisfied Clients

I wanted to take a moment to say how much we appreciate the savings in electric cost with the installation of your PACS units.

We have seen direct savings of 8%-12% off electrical costs every month. My customers, both owners and tenants, benefit greatly from this savings.

We look forward to working with the PACS team in installing these units in the majority of our portfolio.

**– David M. Kasey
Director of Operations
Asset Management Alliance**

We have been more than satisfied with the results from these units.

We have them installed at 9 of our major production plants and have saved on average 17% at each location. The units were installed on our main switch gear at these locations. We plan on installing these units at other facilities as well.

**– Ernie Snyder,
Project Manager
GTS-Welco (Praxair)**

For more information, contact us:

416-873-1870
5285 Solar Drive
Mississauga, ON
info@pacsenergysolutions.com
pacsenergysolutions.com



Fighting climate change
one client at a time



Helping you reduce, both, your cost of energy
and your facilities carbon footprint



What is PACS?

PACS Power Application Correction System (PACS) is an affordable energy management system. PACS uses well-known power-saving technology that has been in use for decades. The trusted technology behind PACS actively helps to increase the efficiency of electrical systems.

- Custom manufactured and sized per client requirements
- Serial Data communications (standard) complete onsite and remote monitoring of facilities electrical system in real time
- Interface capable with most facility data management systems
- Integral circuit breaker available upon request

Monitors : Voltage, Amps, Power Factor, Kva, KW, Harmonics, with a multitude of monitoring functions
*know what, where and how much you save.



Increase Efficiency, Lower Costs with PACS

- ✓ **Rapid ROI**
Typical installations realize a price point that allows a pay back period measured in months, not years.
- ✓ **North American Made Quality**
Our policy is to only use the highest quality components available. Moreover, PACS is ETL Listed to meet or exceed UL-810 requirements, and all PACS units are certified to ULc and CSA Certifications.
- ✓ **Ease of Installation**
PACS is designed for installation on an existing electrical panel. PACS requires no maintenance and minimal computer setup or programming, as well as little to no modification or interruption to daily business during installation.



PACS system configuration and sizing is established for each installation according to the type of business, monthly energy usage, rating of the electrical panel, and the electrical equipment in use. This assures that the proper PACS system is being installed at the right location for the right reasons.



Lifetime Warranty
PACS is thoroughly tested to meet ETL/UL and our own strict testing and quality control standards. All PACS feature a Lifetime Warranty on materials and workmanship. If any issues arise with your PACS installation, we will gladly replace the defective system, free of charge.

How PACS Works

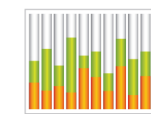
Technology Based on Engineering

PACS uses capacitance to help increase the efficiency of A/C motors and pumps that run everyday throughout your business. High-use A/C motors (found on pumps, conveyors, HVAC, refrigeration, etc.) are responsible, in some businesses, for up to 90% of energy consumption. PACS can help increase the efficiency of these motors, as well as reduce additional costs and penalties that come with running inefficient AC motors.

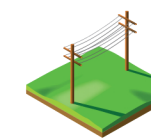
Several key areas that PACS influences:



Power Factor: PACS is able to actively reduce electric bill power factor penalties. This means any additional charges being paid to the utility company for having a power factor of below 0.95 can be reduced significantly after the installation of PACS.



Peak Demand Charges: Peak demand occurs at times when many motors or other powered equipment are running simultaneously. PACS is able to help reduce line current at all times during motor operation, helping to reduce the peak current and associated peak demand charges.



Line Losses: PACS reduces line losses by allowing lines and transformers to carry more load while helping to reduce voltage drop. This reduced voltage drop can equate to between a 1%-3% savings. In addition, lines, which are able to carry higher loads, allow more equipment to run simultaneously on one panel, before expanding the electrical panel is necessary. This can lead to additional cost savings by allowing more equipment to run on existing panels.



Motor Life: PACS is able to reduce motor current and therefore reduce motor temperature. Since heat is the main cause of failure or shortened service life of a motor, if heat output can be reduced, motors could run for a longer period before replacement is needed.

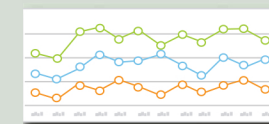


Harmonics : Harmonics are electric power waveforms with frequencies above 60Hz. Any frequency higher than 60Hz only produces additional heat in the AC motor and provides no actual work to power the motor. When power factor is below 0.95, frequencies are present in these motors above 60Hz. PACS helps reduce these frequencies and increases efficiency by reducing this "no work energy", which usually creates heat



Carbon Footprint: Increasing AC motor efficiency & lifespan, and reducing associated "inefficiency penalties" will reduce your business' overall carbon footprint.

Track Your Savings



When it comes to follow-up services, we set the standard. After the installation of PACS, we start a 1-year relationship with each client. Client electric bills + data are obtained to establish a baseline usage and each month following installation, additional bills + data are obtained. At the end of each month all of the usage data is presented to the client in an easy to understand format, allowing you to see exactly what you've saved, where you've saved, and even how you've saved. PACS Series data communications controller provides the data you need for this analysis.